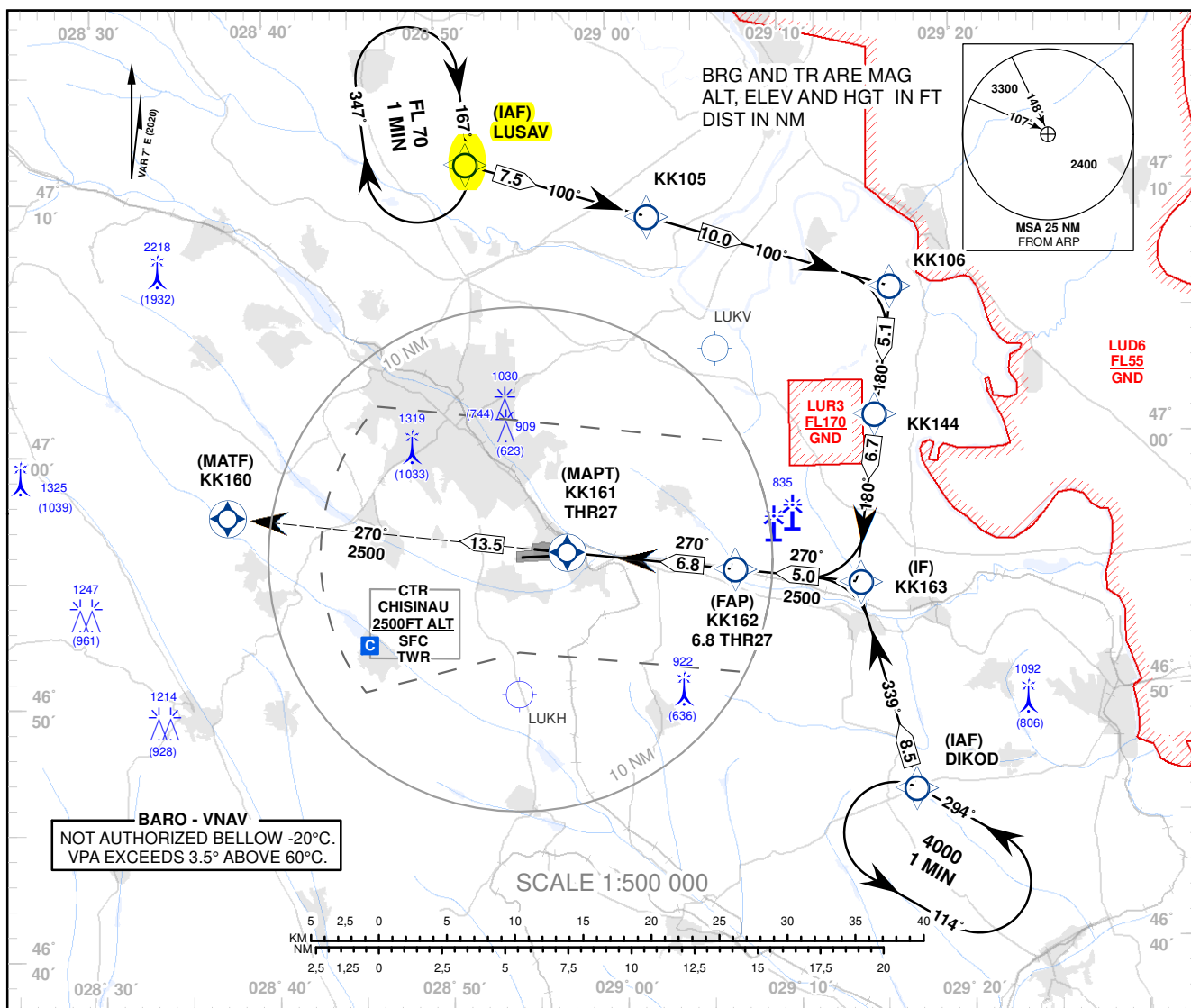


INSTRUMENT APPROACH CHART - ICAO

AD ELEV 399 FT
HEIGHTS RELATED TO
THR RWY 27 ELEV 286 FT

APP: 133.300 MHz
TWR: 118.100 MHz
ATIS: 125.225 MHz

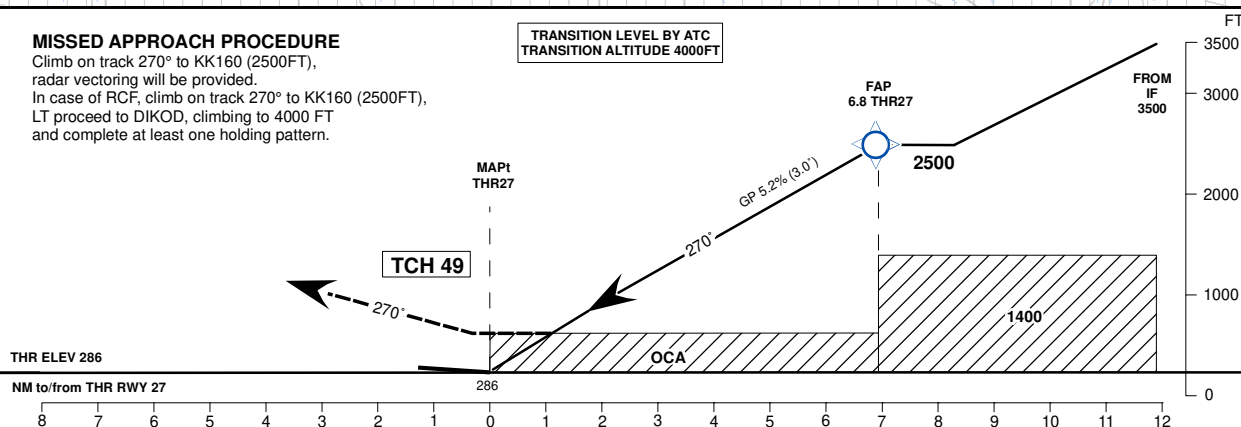
CHISINAU/Intl (LUKK)
RNP RWY 27
(LNAV&LNAV/VNAV ONLY)



MISSED APPROACH PROCEDURE

Climb on track 270° to KK160 (2500FT), radar vectoring will be provided.
In case of RCF, climb on track 270° to KK160 (2500FT),
LT proceed to DIKOD, climbing to 4000 FT and complete at least one holding pattern.

TRANSITION LEVEL BY ATC
TRANSITION ALTITUDE 4000FT



OCA(OCH)	A	B	C	D
LNAV	640 (360)	640 (360)	640 (360)	640 (360)
LNAV/VNAV	601 (315)	601 (315)	601 (315)	601 (315)

DIST THR	7	6	5	4	3	2	1
ALTITUDE (Height)	2500 (2214)	2246 (1960)	1927 (1641)	1609 (1323)	1291 (1005)	972 (686)	654 (368)

Timing not Authorised for Defining the MAPt.

Ground Speed	KT	80	100	120	140	160	180
DISTANCE FAP-MAPt 6.8NM	MIN:SEC	05:06	04:05	03:24	02:55	02:33	02:16
Rate of Descent (5.2%)	FT/MIN	425	531	637	743	849	955

Changes: CHISINAU CTR Changed. IF From 3500FT. Missed APCH Updated. "LUKV/National" Aerodrome Added.

INSTRUMENT APPROACH
CHART - ICAO

AD ELEV – 399FT
HEIGHTS RELATED TO
THR RWY 27 - ELEV 286FT

CHISINAU/Intl (LUKK)
RNP RWY 27
(LNAV&LNAV/VNAV ONLY)

TABULAR DESCRIPTION

RNP RWY 27											
Serial Number	Path descriptor	Waypoint Identifier	Fly-over	Course °M (°T)	MAG VAR	Distance (NM)	Turn Direction	Altitude (FT)	Speed limit (Kt)	VPA°/TCH (FT)	Navigation Specification
010	IF	LUSAV	-	-	+7.0°	-	-	FL70	-	-	RNP APCH
020	TF	KK105	-	100°(107.2°)	+7.0°	7.5	-	-	-	-	RNP APCH
030	TF	KK106	-	100°(107.4°)	+7.0°	10.0	-	-	-	-	RNP APCH
040	TF	KK144	-	180°(186.8°)	+7.0°	5.1	R	-	-	-	RNP APCH
050	TF	KK163	-	180°(187.2°)	+7.0°	6.7	-	+3500	-210	-	RNP APCH
010	IF	DIKOD	-	-	+7.0°	-	-	4000	-	-	RNP APCH
020	TF	KK163	-	339°(346.5°)	+7.0°	8.5	-	+3500	-210	-	RNP APCH
010	IF	KK163	-	-	+7.0	-	-	+3500	-	-	RNP APCH
020	TF	KK162	-	270°(277.1°)	+7.0°	5.0	-	@2500	-	-	RNP APCH
030	TF	RW27/ KK161	Y	270°(276.8°)	+7.0°	6.8	-	@335	-	3.00°/49	RNP APCH
040	CF	KK160	Y	270°(276.8°)	+7.0°	13.5	-	2500	-	-	RNP APCH

WAYPOINT LIST

RNP RWY 27		
Waypoint Identifier		
Coordinates		
IAF LUSAV	47°11'14.0"N	028°51'49.0"E
IAF DIKOD	46°46'06.0"N	029°17'03.0"E
KK105	47°09'00.5"N	029°02'17.9"E
KK106	47°06'00.8"N	029°16'15.9"E
KK144	47°00'58.9"N	029°15'22.9"E
KK163	46°54'19.7"N	029°14'09.5"E
KK162	46°54'57.5"N	029°06'55.3"E
RW27 / KK161	46°55'48.24"N	028°57'04.55"E
KK160	46°57'26.5"N	028°37'29.2"E